

# FILTER OVERVIEW WITH SERVICE INTERVALS AND CAPACITIES

## 5025 Series Tractors (5225, 5325, 5425, 5525, 5625)

### CAB

#### RECIRCULATION AIR FILTER

– [RE195491](#)

Please order two.

Clean after every 300 hours and as required.

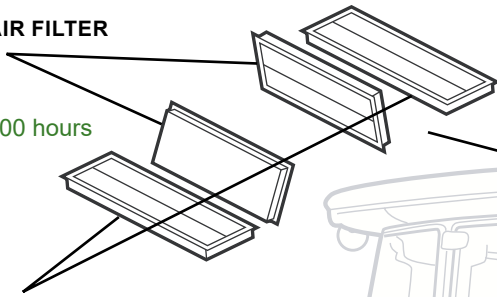
### CAB

#### FRESH AIR FILTER

– [RE198488](#)

Please order two.

Clean after every 300 hours and as required.



### ENGINE

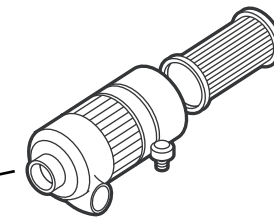
#### OIL FILTER (5225–5325) – [RE519626](#)

Replace after 300 hours and then every 450 hours or annually if using John Deere™ Plus-50™ oil.

#### OIL FILTER (5425–5625) – [RE504836](#)

Replace after 100 hours and then every 450 hours or annually if using John Deere™ Plus-50™ oil.

(Click here for [capacity](#))



### ENGINE

#### SECONDARY AIR FILTER – [AT171854](#)

Replace after every 1800 hours or every 1 year and as required.

### ENGINE

#### PRIMARY AIR FILTER – [KV16429](#)

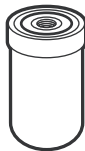
Clean after every 300 hours and replace every 1800 hours or annually and as required.

### HYDRAULIC/TRANSMISSION

#### OIL FILTER – [RE197065](#)

Replace after 100 and then every 600 hours.

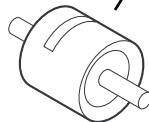
(Click here for [capacity](#))



### ENGINE

#### IN-LINE FUEL FILTER – [RE220719](#)

Replace as required.

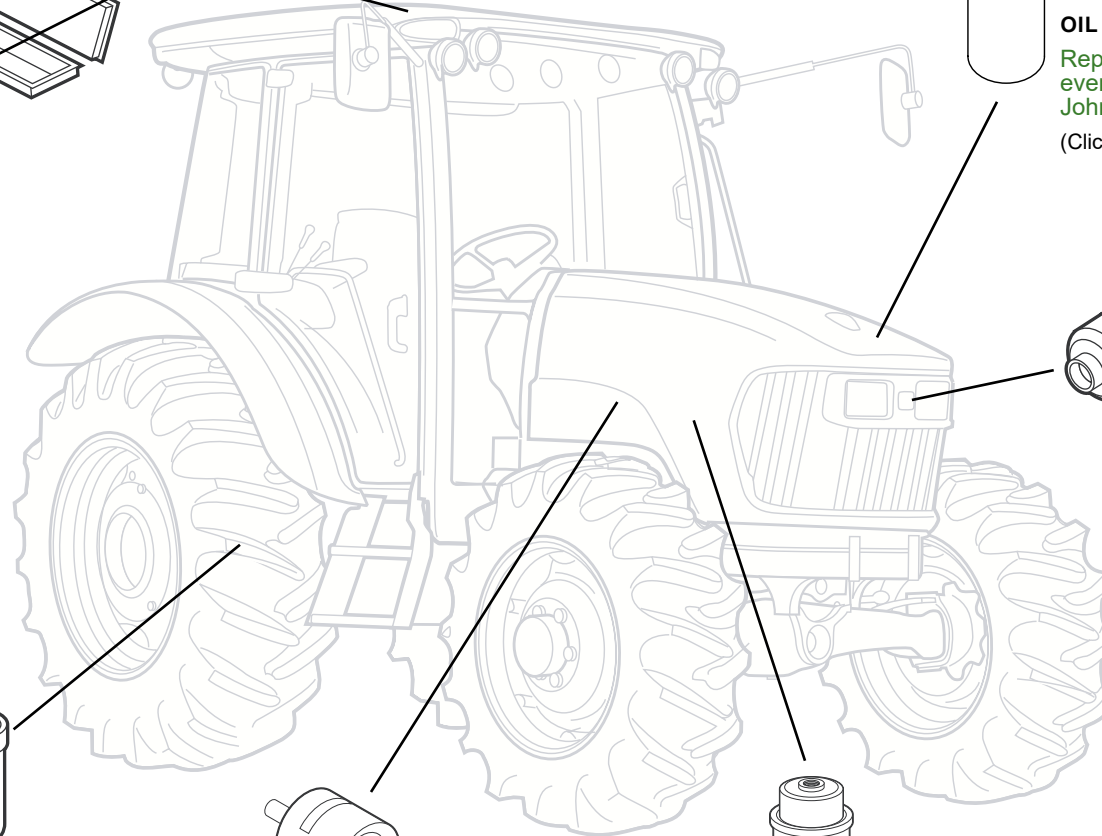


### ENGINE

#### FUEL FILTER (5225–5325) – [RE508202](#)

#### FUEL FILTER (5425–5625) – [RE522868](#)

Replace after every 300 hours and as required.



**JOHN DEERE**  
Genuine Parts and Service

# CAPACITIES

## 5025 Series Tractors (5225, 5325, 5425, 5525, 5625)

### CAPACITIES (Approximate):

#### Fuel Tank:

Straddle Mount and Hi-Crop .....	94.6 L (25 gal)
Cab and IOOS .....	126.8 L (33.5 gal)

#### Cooling System:

##### Cool-Gard™

5225-5325 .....	9.5 L (10 qt)
5425-5525-5625 .....	11.4 L (3 gal)

#### Crankcase with Filter:

##### Plus-50™

5225-5325 .....	10 L (2.6 gal)
5425-5525-5625 .....	8.5 L (2.24 gal)

#### Transmission and Hydraulic System:

##### Hy-Gard™

9/3 SyncShuttle .....	39 L (10.3 gal)
12/12 Power Reverser™ .....	43.5 L (11.5 gal)
24/24 Power Reverser™ .....	45.4 L (12 gal)

#### Mechanical Front Wheel Drive (MFWD) Axle:

##### Hy-Gard™

Differential Housing .....	4.5 L (1.18 gal)
Wheel Hub (Each) .....	0.7 L (0.18 gal)

[Return to Filter Overview](#)

